

MONTHLY MEMBERSHIP PROGRESS REPORT

District 31 S

Results as of: 3/31/2026

GMT:

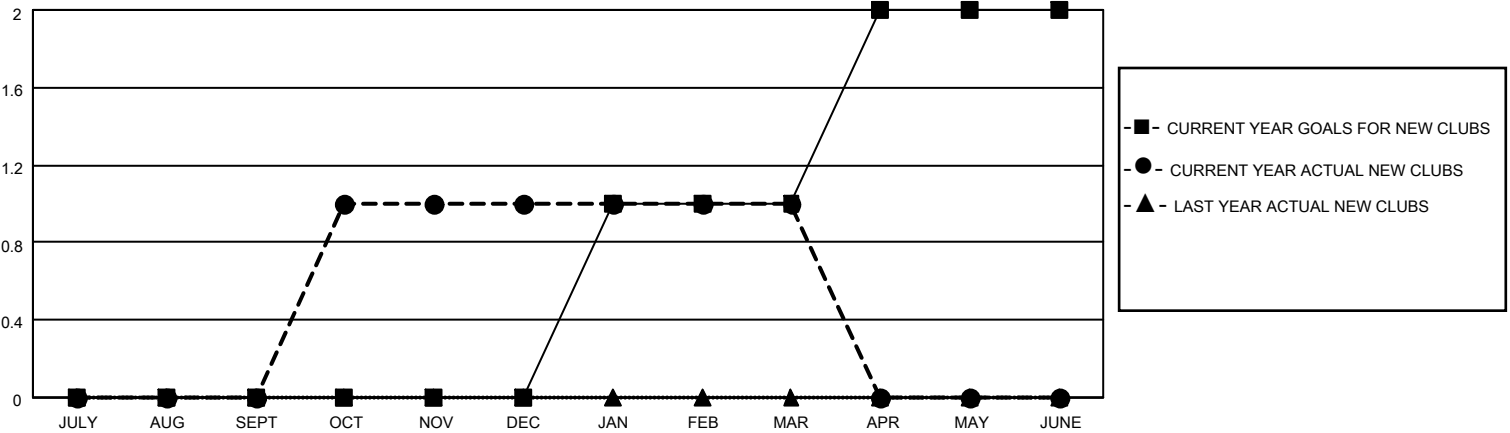
LOCATION NORTH CAROLINA

GMT CA

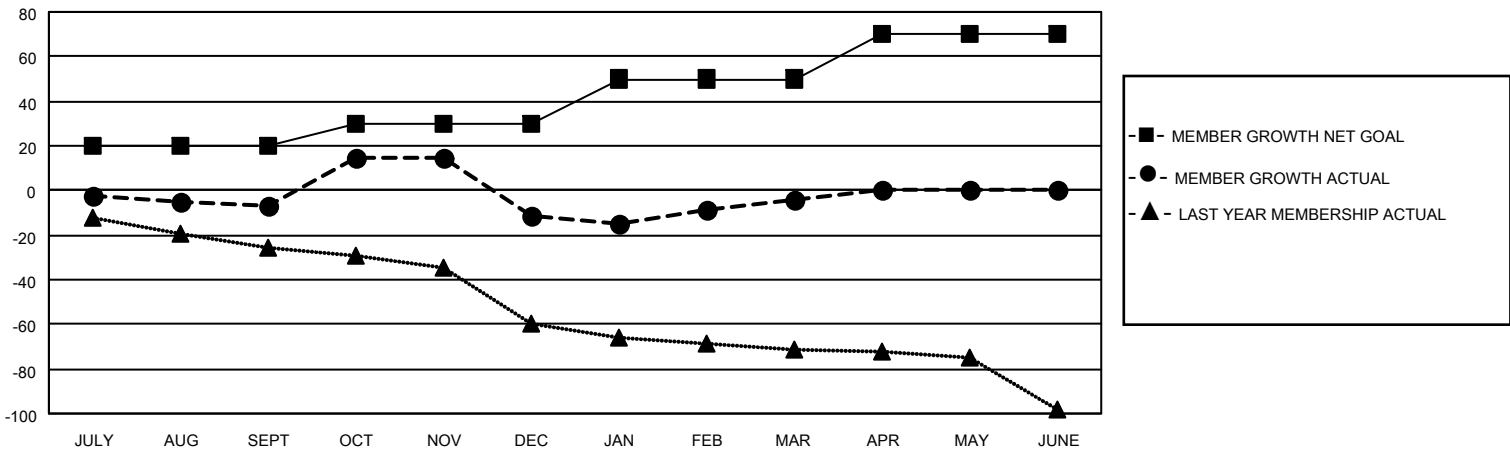
Clubs			
RESULTS FOR 2025-2026			
QUARTER	NEW CLUB GOAL	NEW CLUBS	DROPPED CLUBS
JULY/AUG/SEPT	0	0	0
OCT/NOV/DEC	0	1	2
JAN/FEB/MAR	1	0	1
APR/MAY/JUNE	1	0	0

Members			
RESULTS FOR 2025-2026			
QUARTER	MEMBER GROWTH NET GOAL	MEMBER GROWTH ACTUAL	DROPPED MEMBERS ACTUAL (including transfers)
JULY/AUG/SEPT	20	18	23
OCT/NOV/DEC	10	38	40
JAN/FEB/MAR	20	34	24
APR/MAY/JUNE	20	0	0

GOALS AND ACTUAL NEW CLUBS CUMULATIVE



GOALS AND ACTUAL MEMBERS CUMULATIVE



DROPPED CLUBS: 3	16 CLUBS OF 44 ADDED 1 OR MORE NEW MEMBERS	GENDER DISTRIBUTION
		MALE 556 (70.03%)
		FEMALE 238 (29.97%)
DROPPED MEMBERS	CLICK HERE FOR CUMULATIVE MEMBERSHIP DATA	TOTAL FAMILY UNIT MEMBERS 165
DECEASED 10		FAMILY MEMBERS PAYING HALF DUES 86
CLUB CANCELLED 12		
OTHER 65		
TOTAL 87		